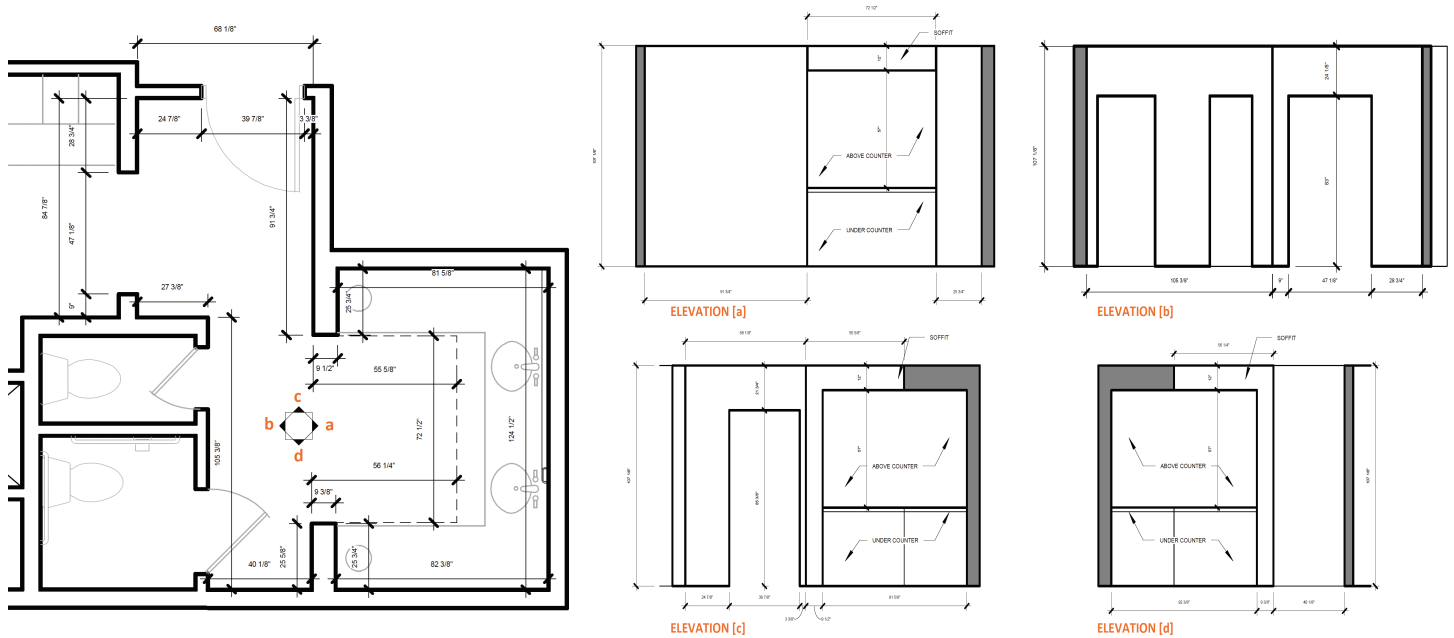


Black Crow Studios: Measurement Guide

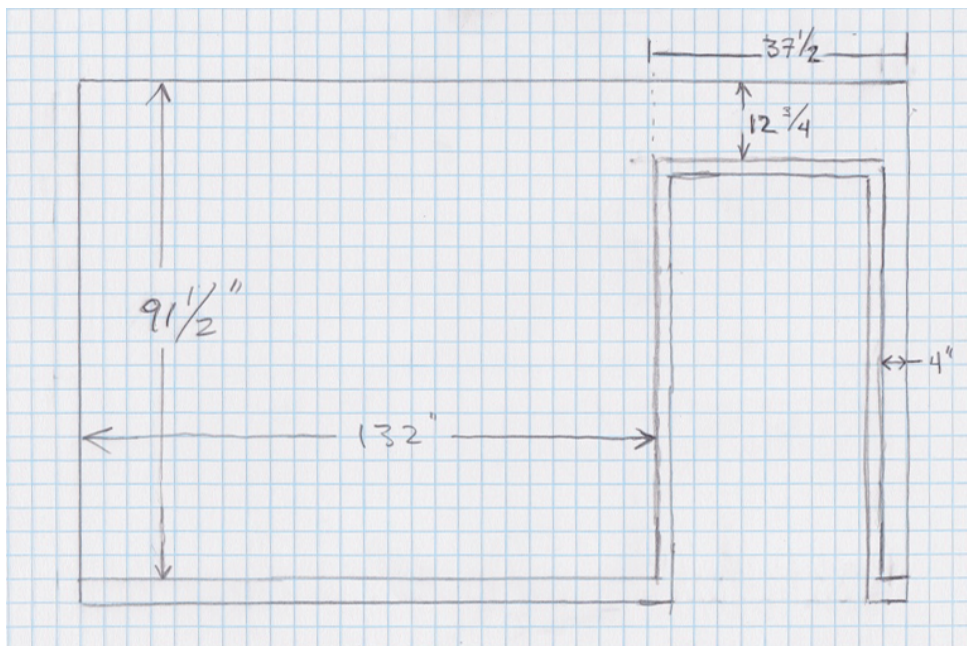
MADE TO MEASURE MURALS

Every custom mural we design is unique to each space and the panels are engineered to fit the space exactly. This means it is very important to have accurate measurements before we start the design process. It is best if we can get detailed wall measurements, including the location of any doors, windows, built-ins, etc.

We prefer to receive the measurements in the form of elevations or floor plans. Below are good examples of this:



If it is not possible to provide CAD drawings, a drawing by hand that includes the measurements is also acceptable, like the image below:



Black Crow Studios: Measurement Guide

INSTALLING PANELS

Murals are printed in 53" wide panels that include a 2" overlap for double cutting. A few inches of overage are added to the overall width of the mural and to the bottom of each panel. This allows the installer to trim to fit the panels on site. We also provide an install guide that includes visual and written instructions for installing the panels. An example of this is below:



PANEL 1

PANEL 2

PANEL 3

PANEL 4

START INSTALLATION WITH PANEL 1 ON THE FAR LEFT SIDE OF THE WALL.

THE DESIGN IS A MURAL IN 4 PANELS. THE PANELS HAVE A 2" OVERLAP THAT NEEDS TO BE DOUBLE CUT TO GET A SEAMLESS LOOK.

THERE IS A WHITE BORDER AROUND EACH PANEL. IT IS NOT PART OF THE OVERLAP AND MUST BE TRIMMED OFF BEFORE INSTALLATION.

AFTER PANEL 1 IS UP CORRECTLY, INSTALL PANEL 2 MATCHING THE OVERLAP UP PERFECTLY BEFORE DOUBLE-CUTTING. CONTINUE THROUGH PANEL 4.

THERE ARE A FEW INCHES OF EXTRA HEIGHT AND OVERALL WIDTH OF THE MURAL. TRIM EXCESS AFTER INSTALLATION IS COMPLETE, DO NOT PRE-TRIM.

USE A PRE-MIXED, HEAVY DUTY, CLEAR, WALLPAPER ADHESIVE SUCH AS ROMAN PRO-870 FOR INSTALLATION. THE MATERIAL IS A TYPE I COMMERCIAL GRADE PVC FREE WALLCOVERING. SIMILAR TO INSTALLING VINYL.

PLEASE INSPECT THE PANELS BEFORE INSTALLATION. BLACK CROW STUDIOS IS NOT RESPONSIBLE ONCE PANELS ARE ADHERED TO THE WALL. IF THERE ARE ANY ISSUES, STOP INSTALLATION AND PLEASE CALL (562) 628-8539

Please feel free to contact us before heading to the job site to confirm the measurements that are needed.